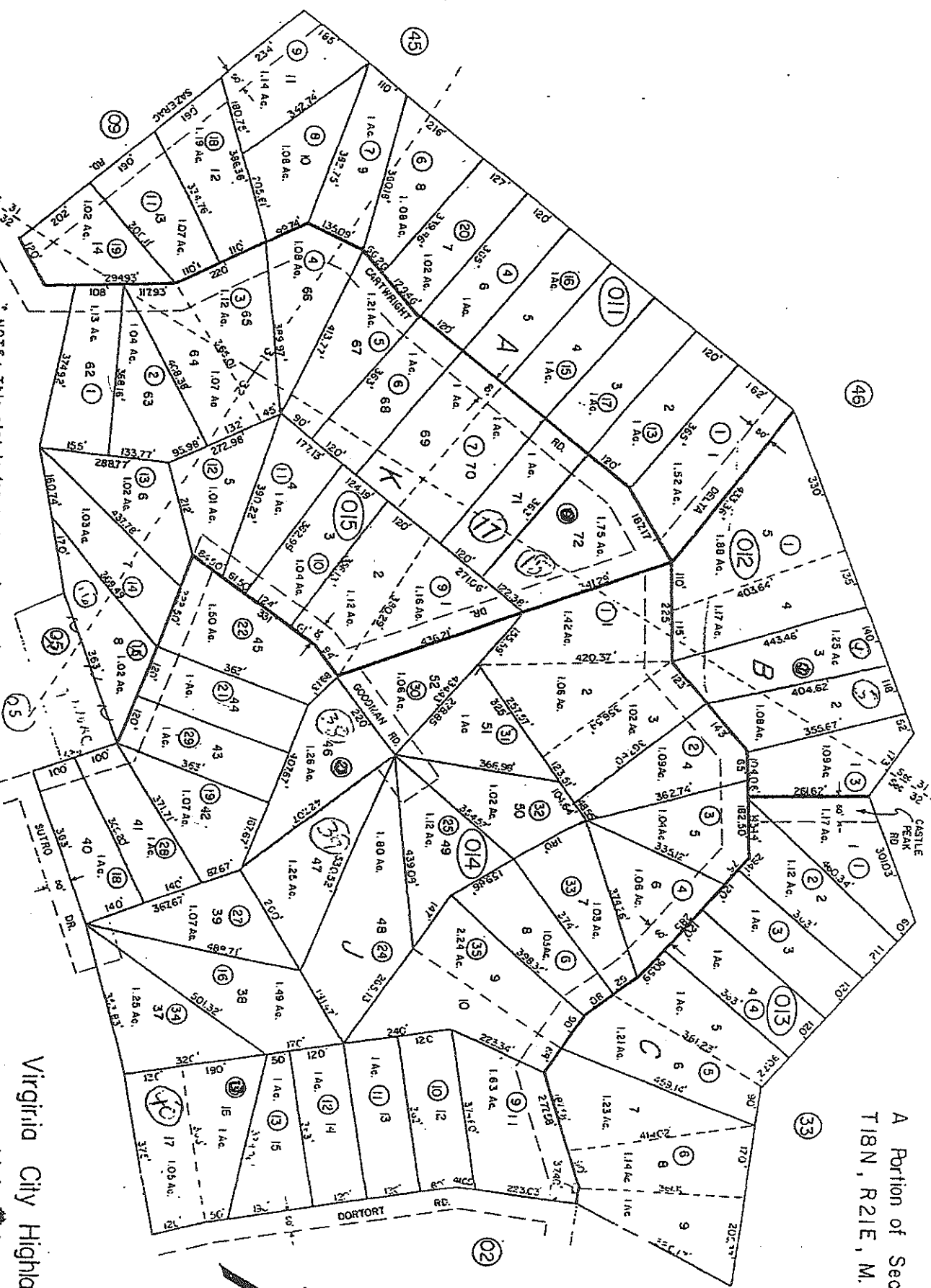


LEV/DOAS/ JUNE 92/TG  
 LEV/DOAS/DEC 88/RAH  
 W/ DCA 647/VA  
 10/DOAS/SEPT 79/WG

NOTE: This plat is for assessment use only and does not represent a survey. No liability is assumed as to the accuracy of the data delineated hereon. Use of this plat for other than assessment purposes is forbidden unless approved by the Dept.

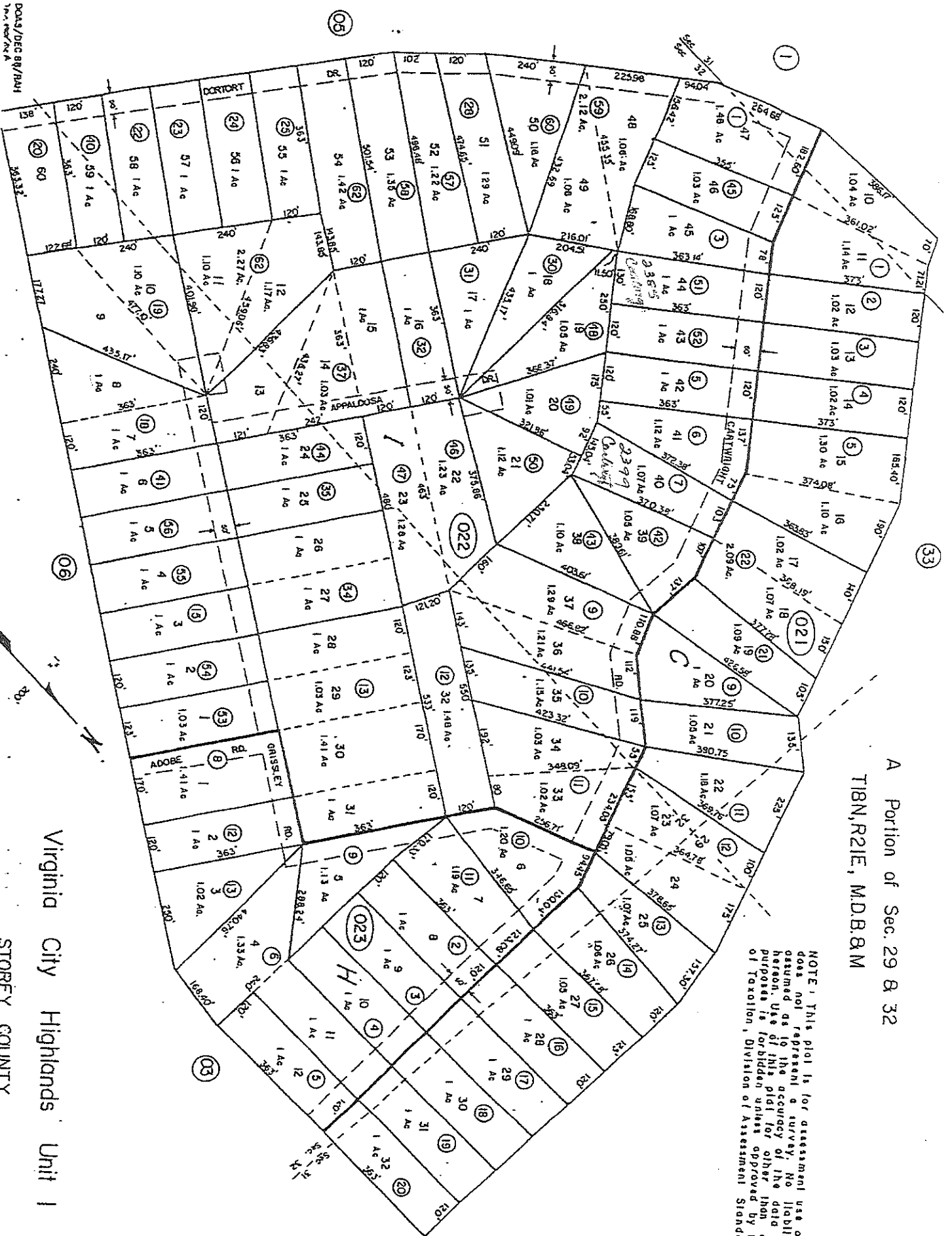


A Portion of Sec. 31 & 32  
 T18N, R21E, M.D.B. 8.M.

Virginia City Highlands  
 Unit 1  
 STOREY COUNTY

A Portion of Sec. 29 & 32  
T18N,R21E, M.D.B.8M

NOTE: This plat is for assessment use only and does not represent a survey. No liability is assumed as to the accuracy of the data delineated hereon. Use of this plat for other than assessment purposes is forbidden unless approved by the Dept. of Taxation, Division of Assessment Standards.

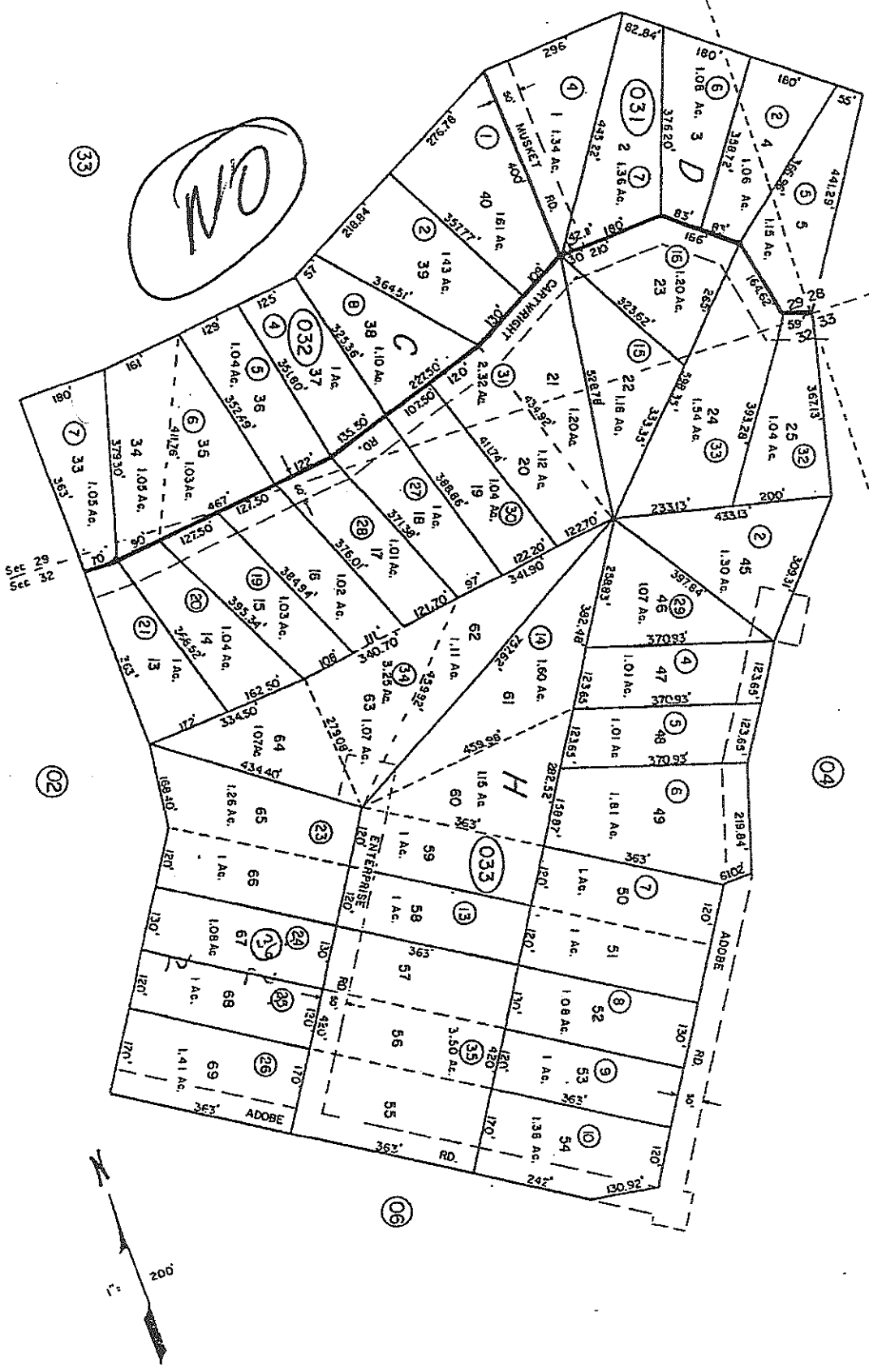


Virginia City Highlands Unit 1

STOREY COUNTY

DATA/DEC BY/BAW  
7/1/2011 10:41 AM

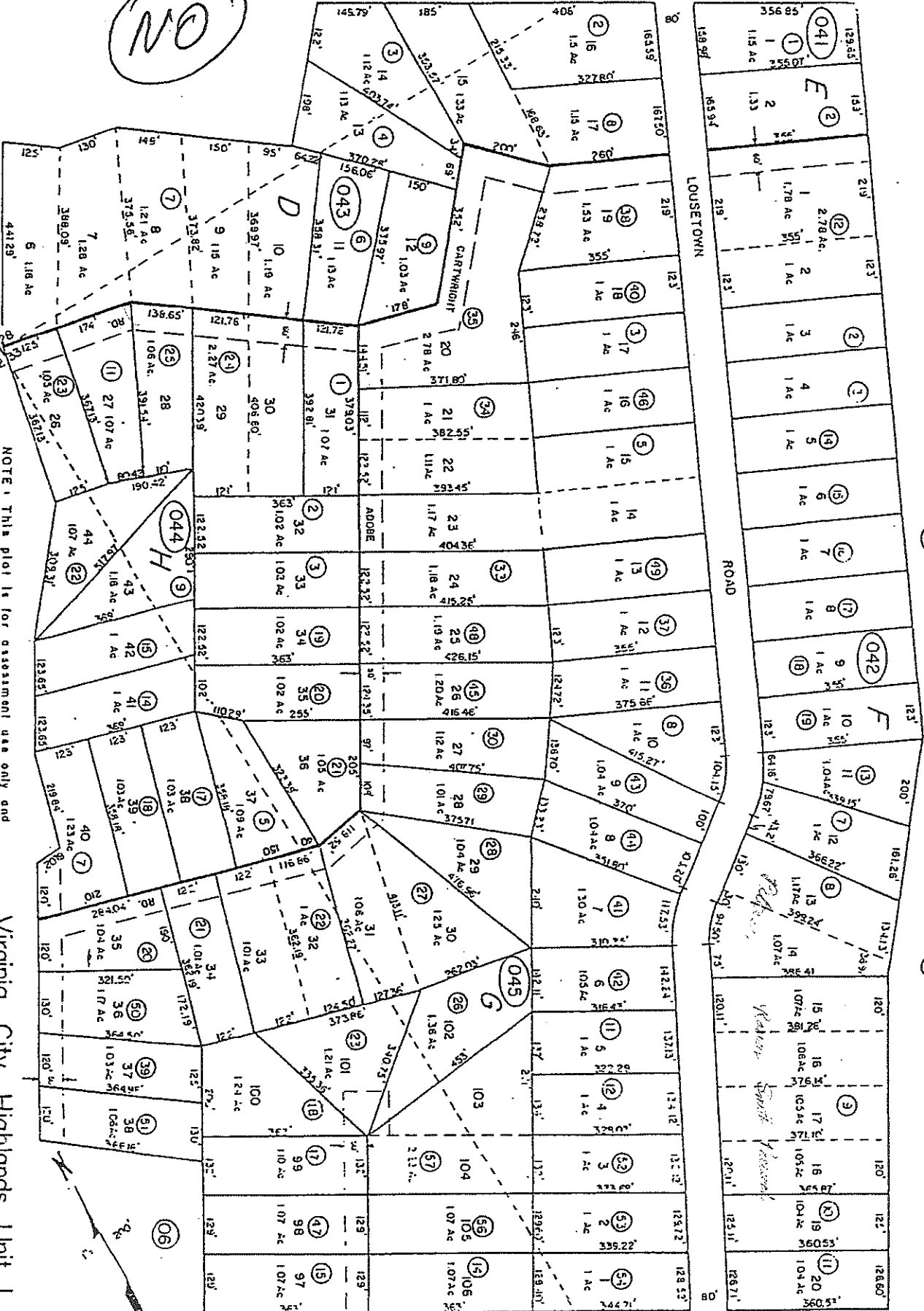
A Portion of Sec. 28, 29, 32 & 33  
T18N, R21E, M.D.B. 8.M.



NOTE: This plat is for assessment use only and does not represent a survey. No liability is assumed as to the accuracy of the data delineated hereon. Use of this plat for other than assessment

A Portion Sec. 32, 33, & 28, T18N, R21E

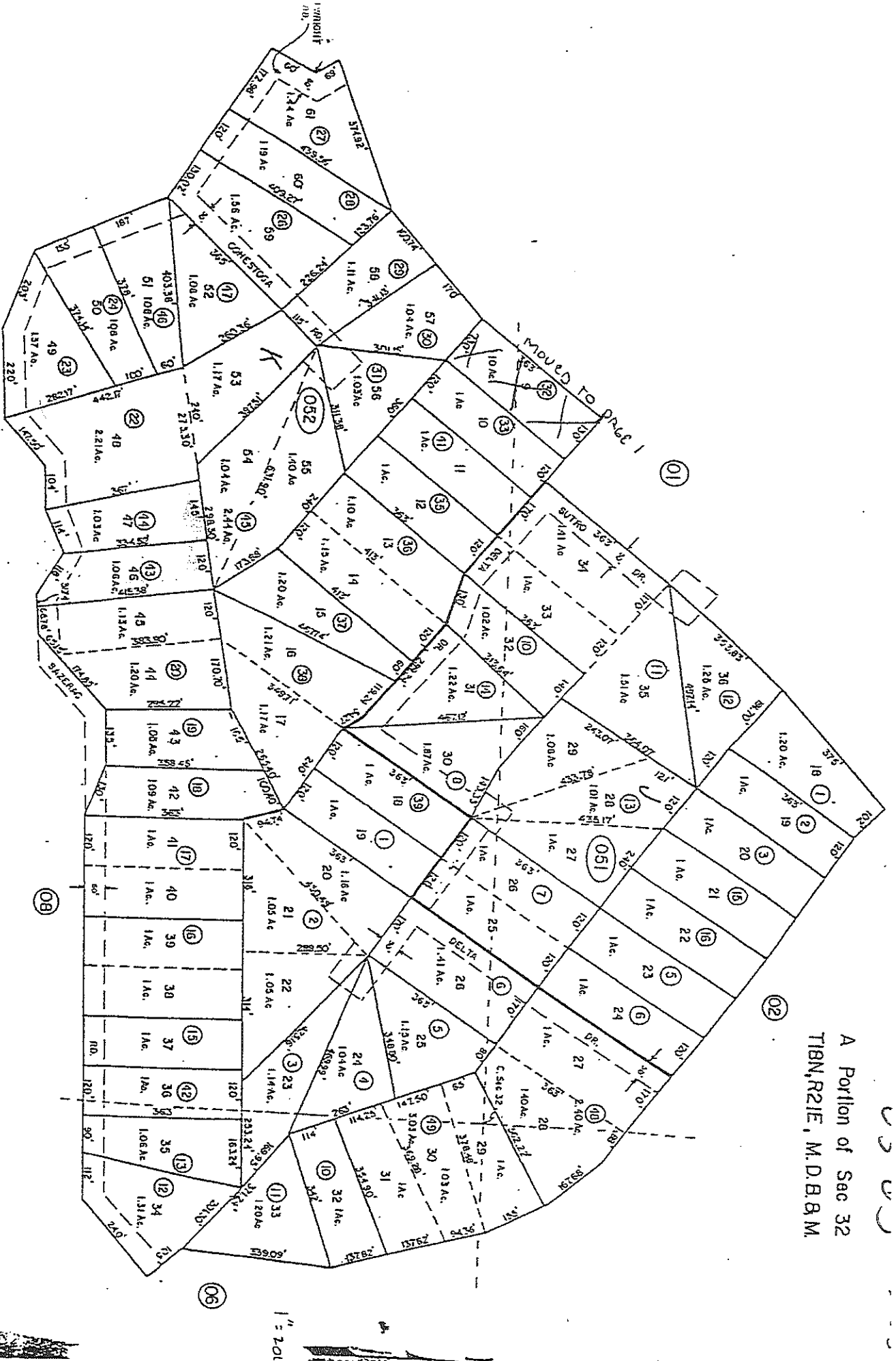
03-024



NOTE: This plat is for assessment use only and does not represent a survey. No liability is assumed as to the accuracy of the data delineated hereon. Use of this plat for other than assessment

Virginia City Highlands Unit I  
STOREY COUNTY

A Portion of Sec 32  
T18N, R21E, M.D.B.M.



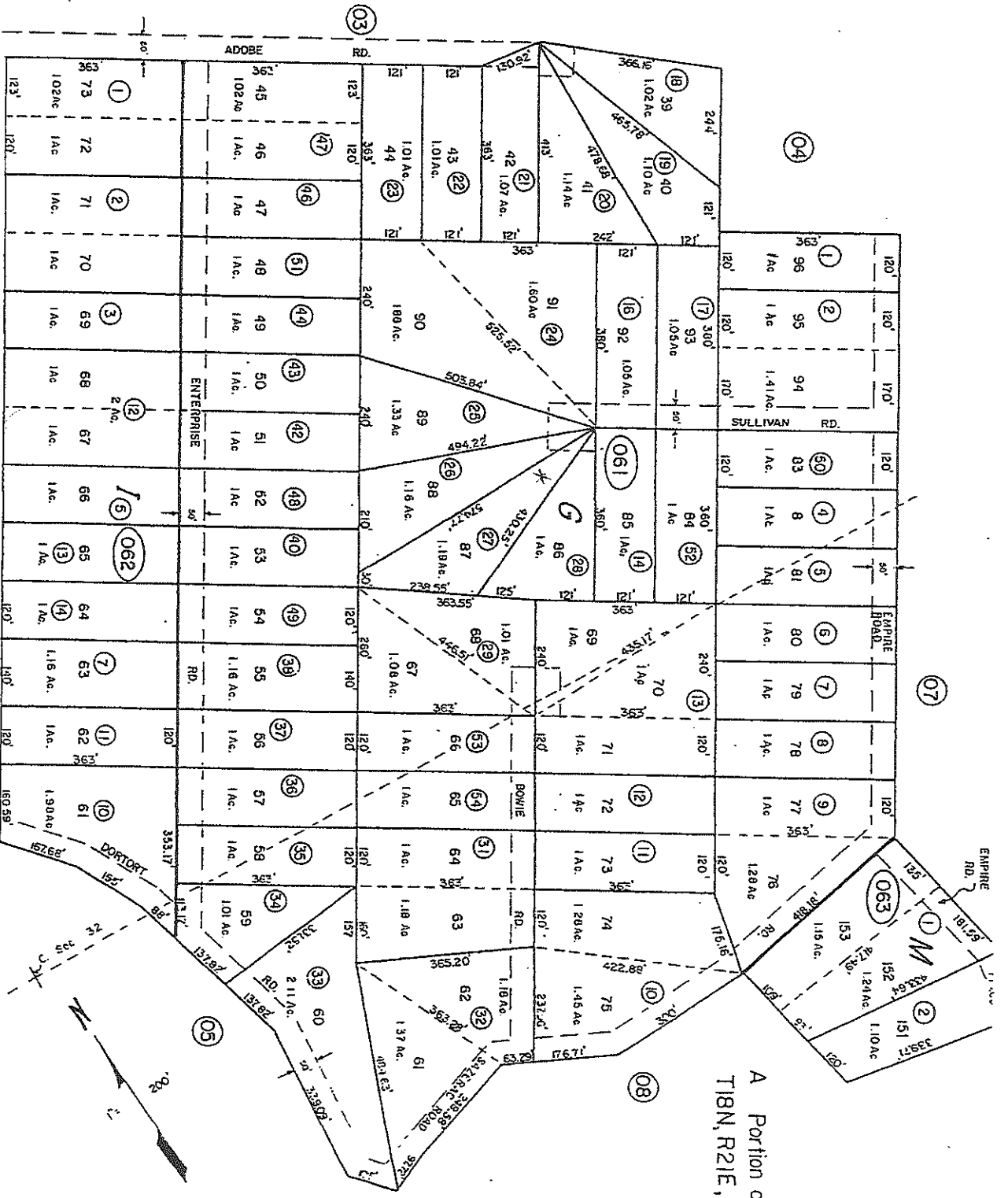
Virginia City Highlands Unit #1

STOREY COUNTY

REV/DOAS/DEC 08/11/11  
C:\080808\1111

03-06

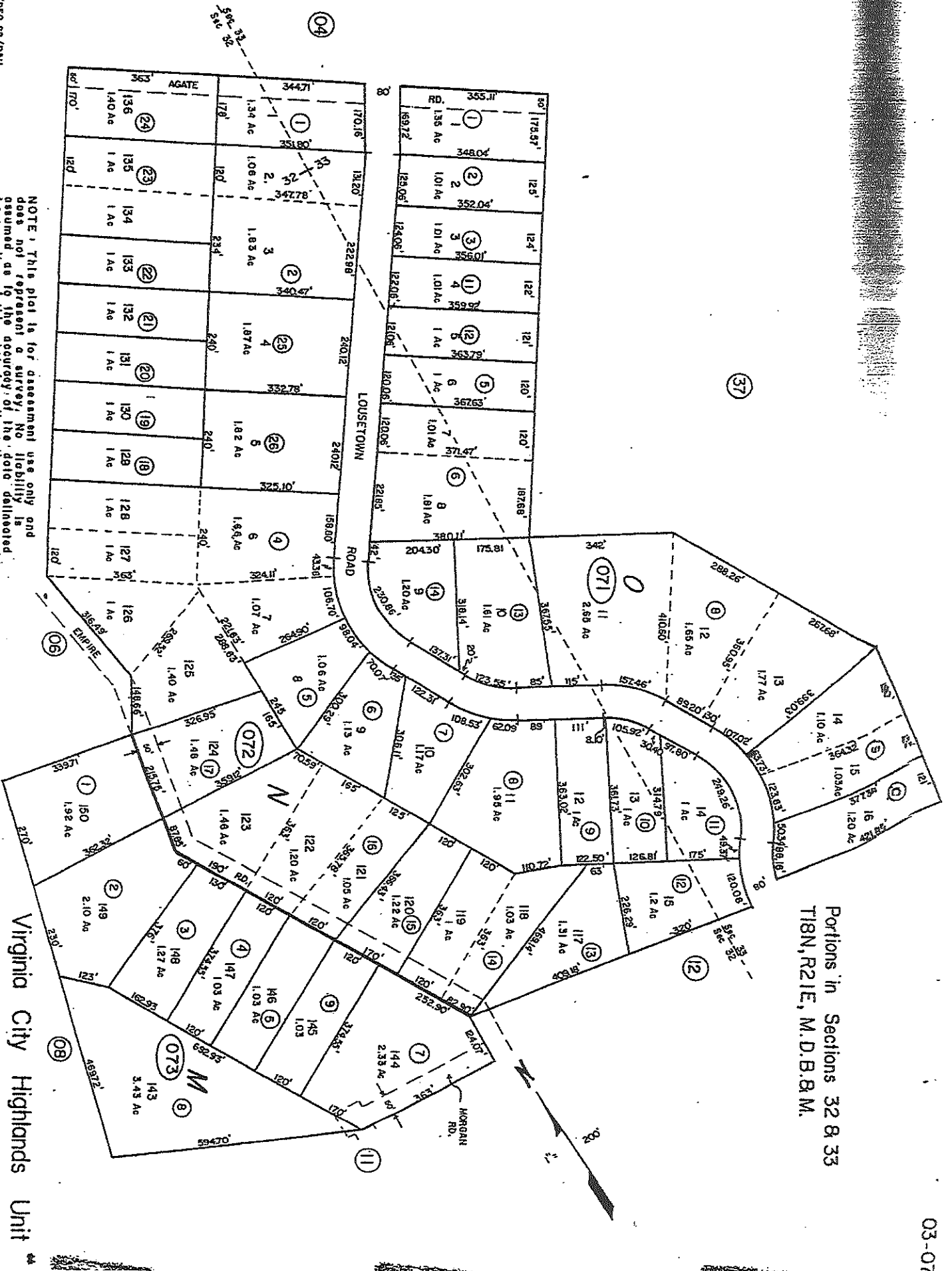
A Portion of Sec. 32  
T18N, R21E, M.D.B. 8M



NOTE: This plat is for assessment use only and does not represent a survey. No liability is assumed as to the accuracy of the data delineated hereon. Use of this plat for other than assessment purposes is forbidden unless approved by the Dept.

Virginia City Highlands Unit #1  
STOREY COUNTY

Portions in Sections 32 & 33  
T18N, R21E, M.D.B. & M.



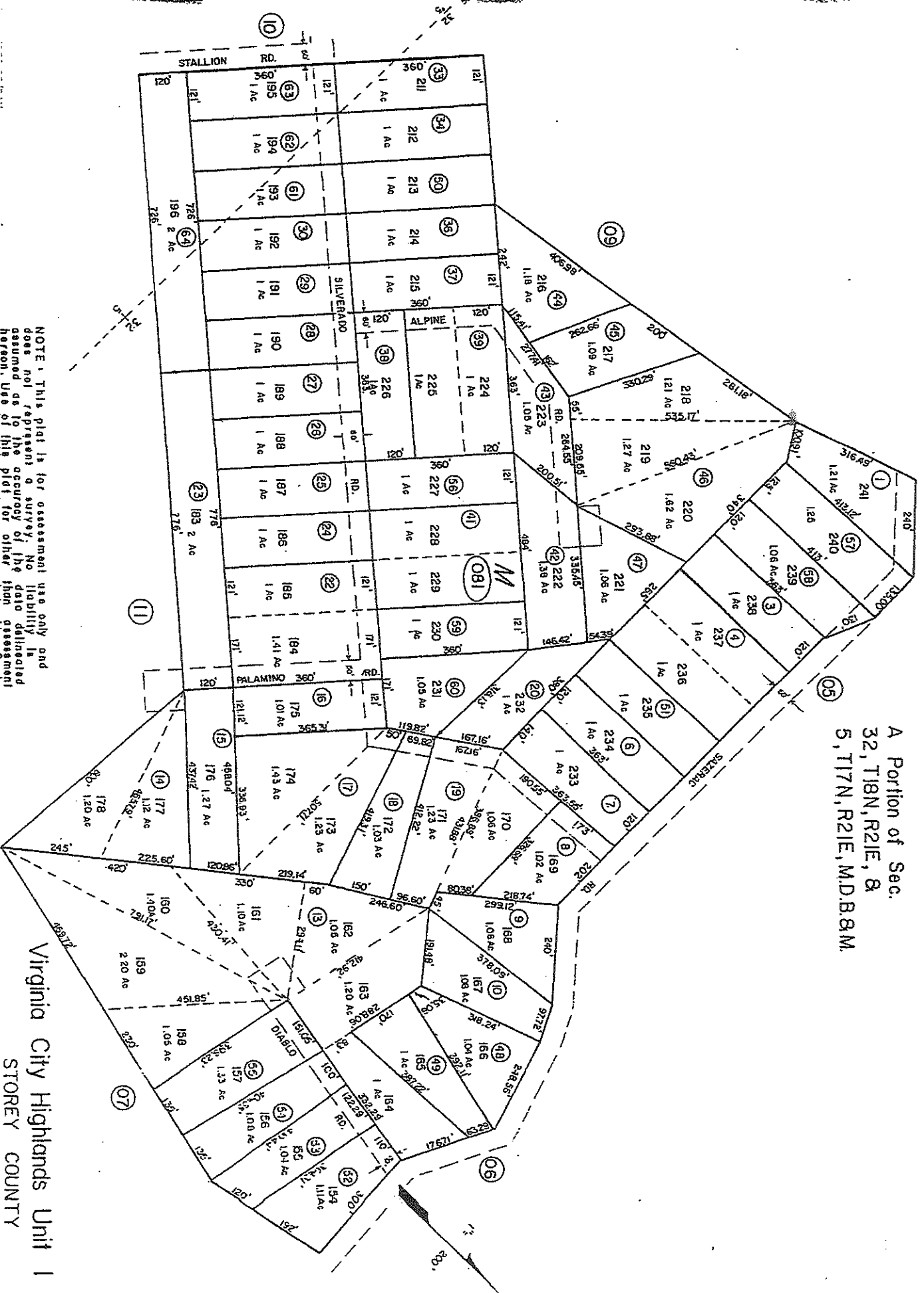
NOTE: This plat is for assessment use only and does not represent a survey. No liability is assumed as to the accuracy of the data delineated hereon. Use of this plat for other than assessment purposes is forbidden unless approved by the Dept. of Transportation.

Virginia City Highlands Unit  
STOREY COUNTY

DOAS/DEC 88/RAH  
CCT 88-89/RAH  
DTP/DA/SEP 79/WJ

03-08

A Portion of Sec. 32, T18N, R21E, & 5, T17N, R21E, M.D.B.&M.



NOTE: This plat is for assessment use only and does not represent a survey. No liability is assumed as to the accuracy of the data delineated hereon. Use of this plat for other than assessment

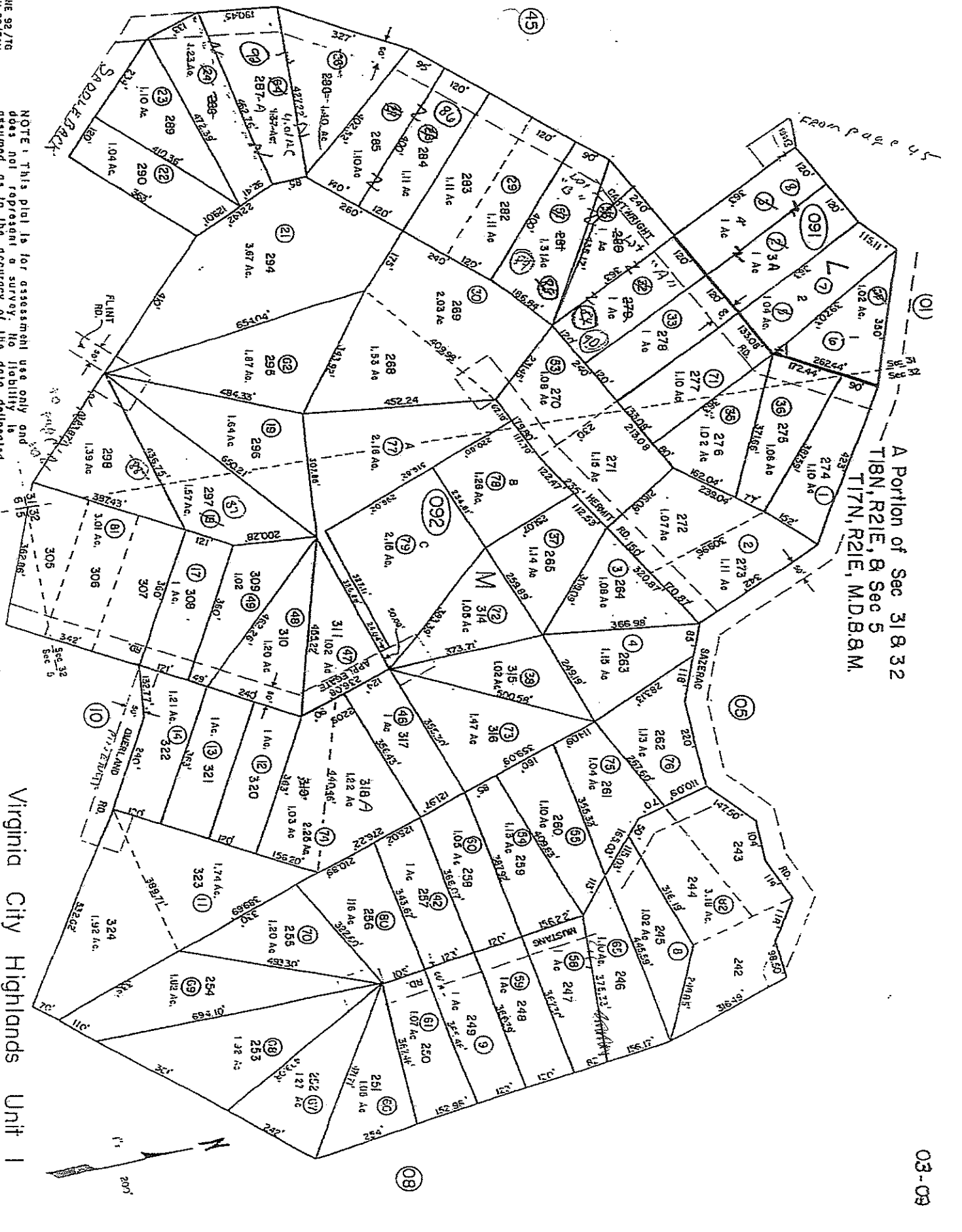
Virginia City Highlands Unit I  
STOREY COUNTY



NOTE: This plat is for assessment use only and does not represent a survey. No liability is assumed as to the accuracy of the data delineated hereon. Use of this plat for other than assessment

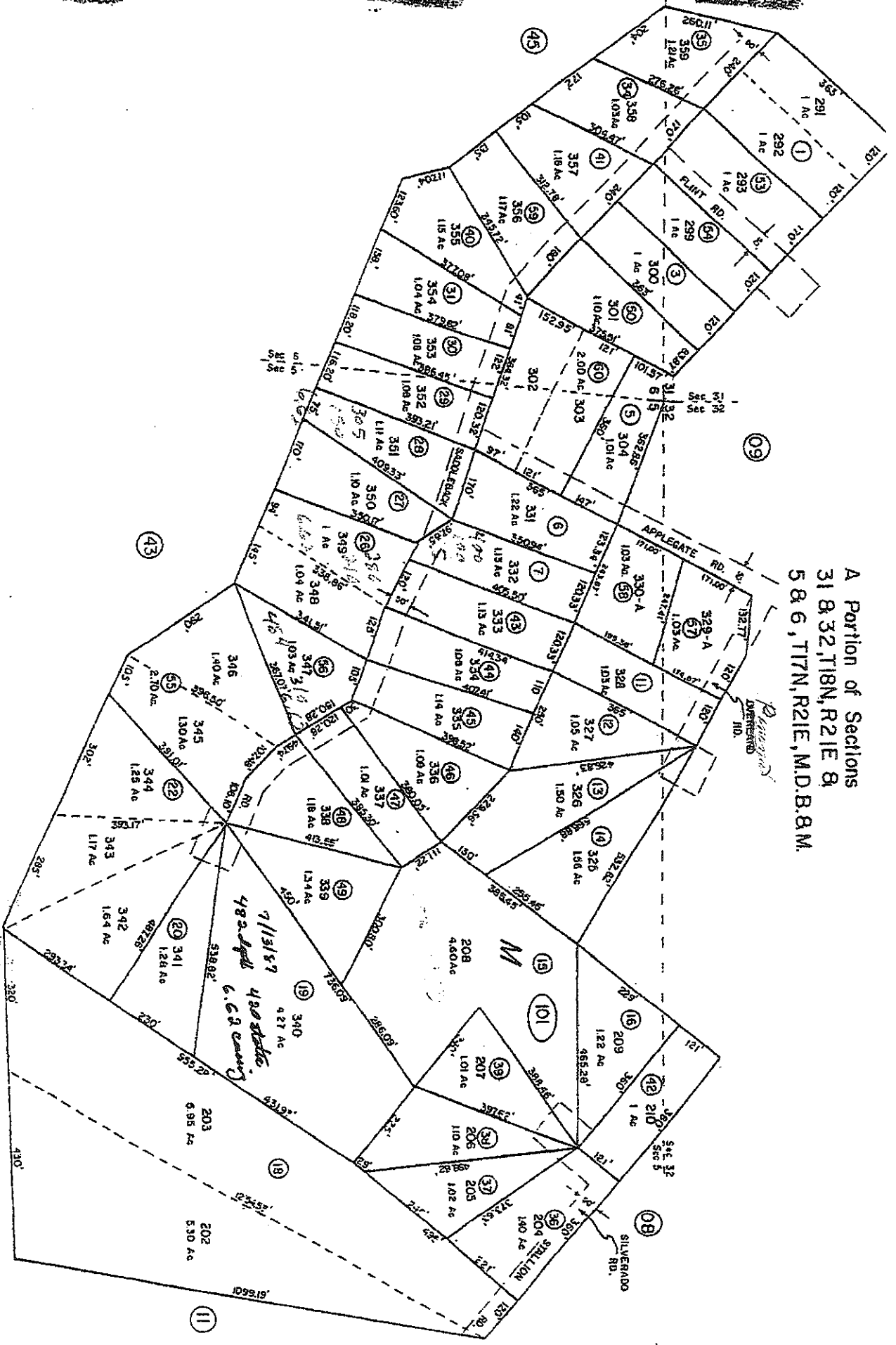
From page 45

A Portion of Sec 31 & 32  
T18N, R21E, & Sec 5  
T17N, R21E, M.D.B. & M.



Virginia City Highlands Unit 1

A Portion of Sections  
 31 & 32, T18N, R21E &  
 5 & 6, T17N, R21E, M.D.B.&M.

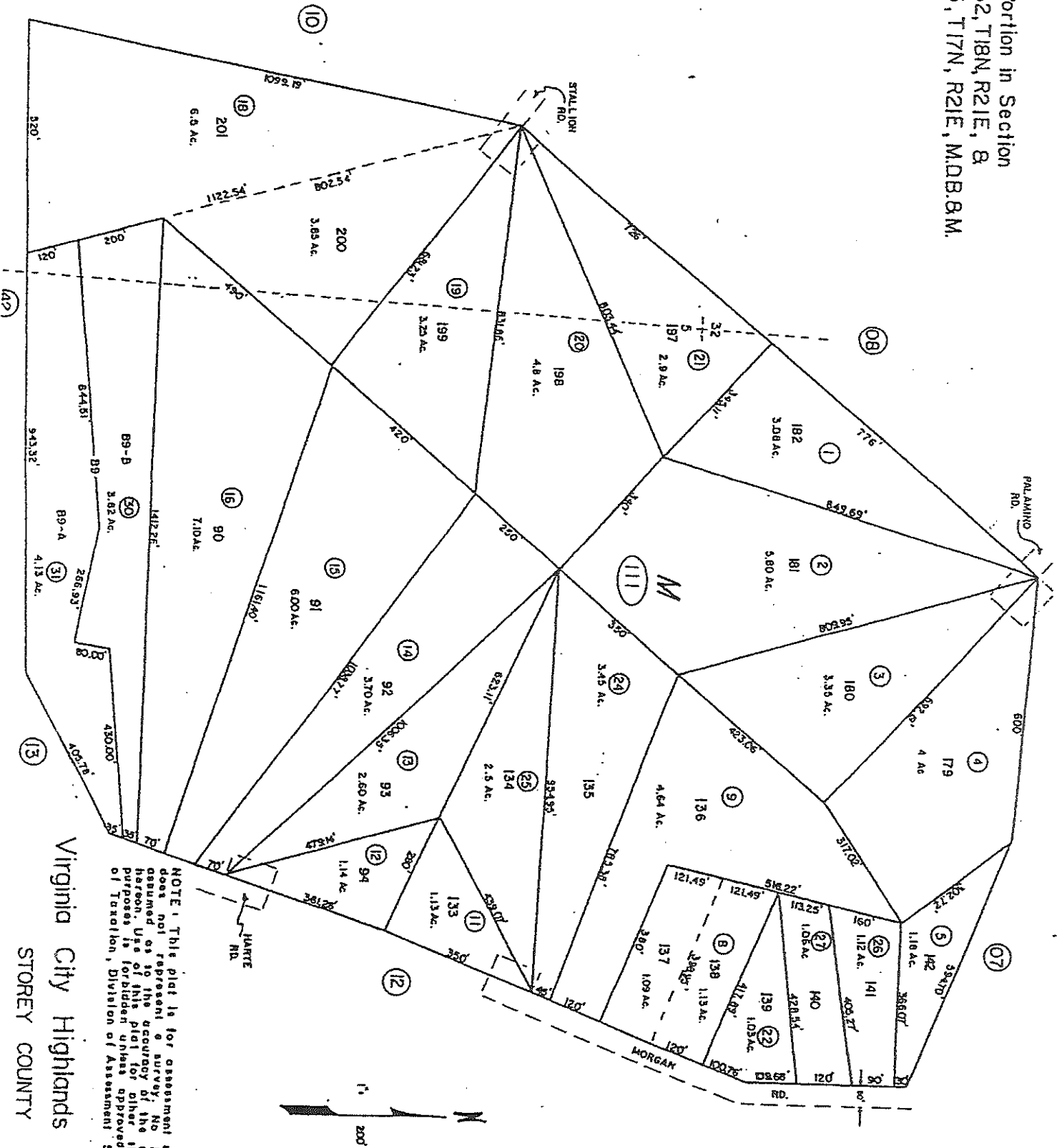


NOTE: This plot is for assessment use only and does not represent a survey. No liability is assumed as to the accuracy of the data delineated hereon. Use of this plot for other than assessment purposes is forbidden unless approved by the Dept.

Virginia City Highlands Unit 1  
 STOREY COUNTY

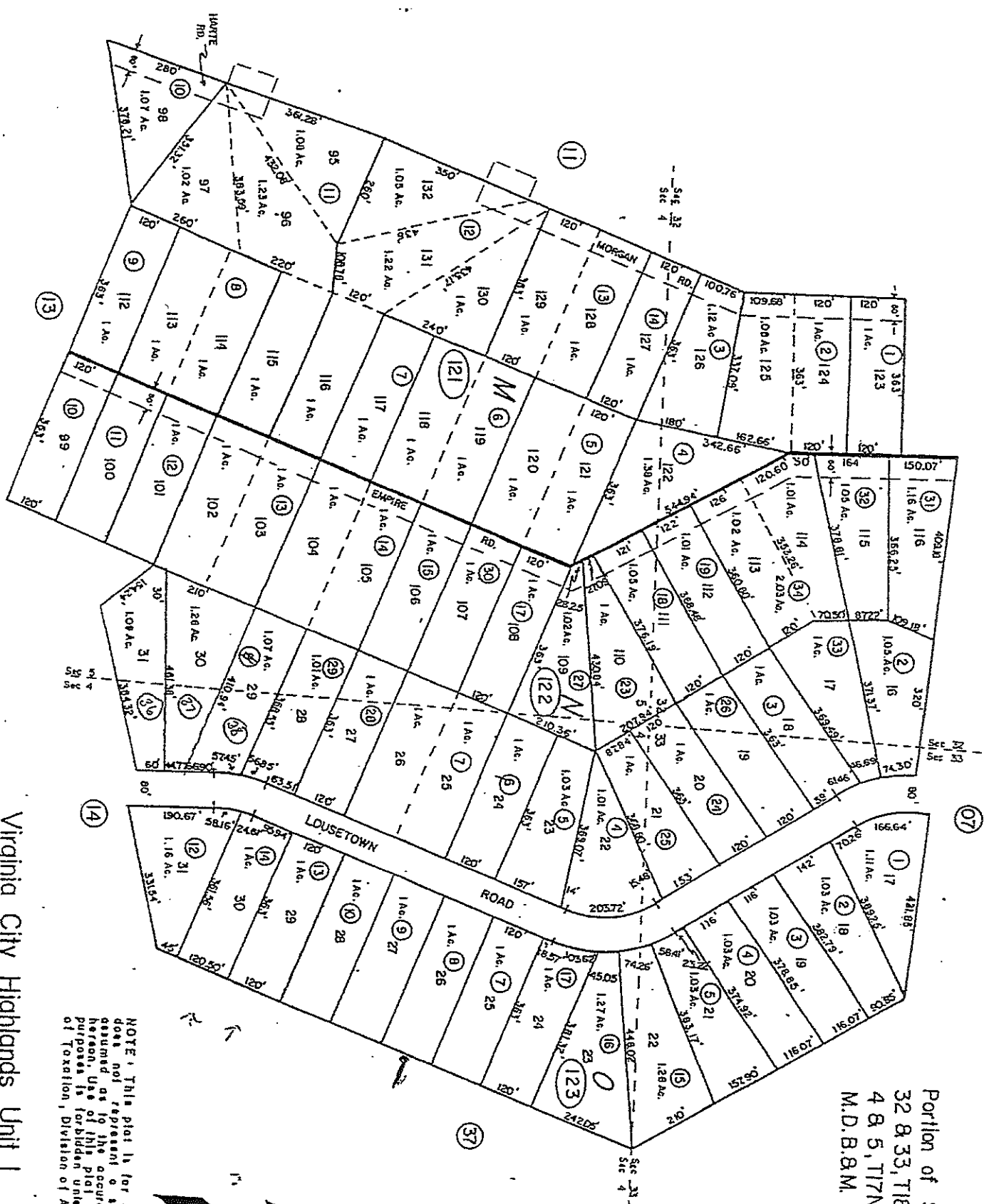
03-10

Portion in Section  
 32, T18N, R21E, &  
 5, T17N, R21E, M.D.B. & M.



NOTE: This plat is for assessment use only and does not represent a survey. No liability is assumed as to the accuracy of the data delineated hereon. Use of this plat for other purposes is forbidden unless approved by the Director of Taxation, Division of Assessment Standards.

Virginia City Highlands Unit  
 STOREY COUNTY

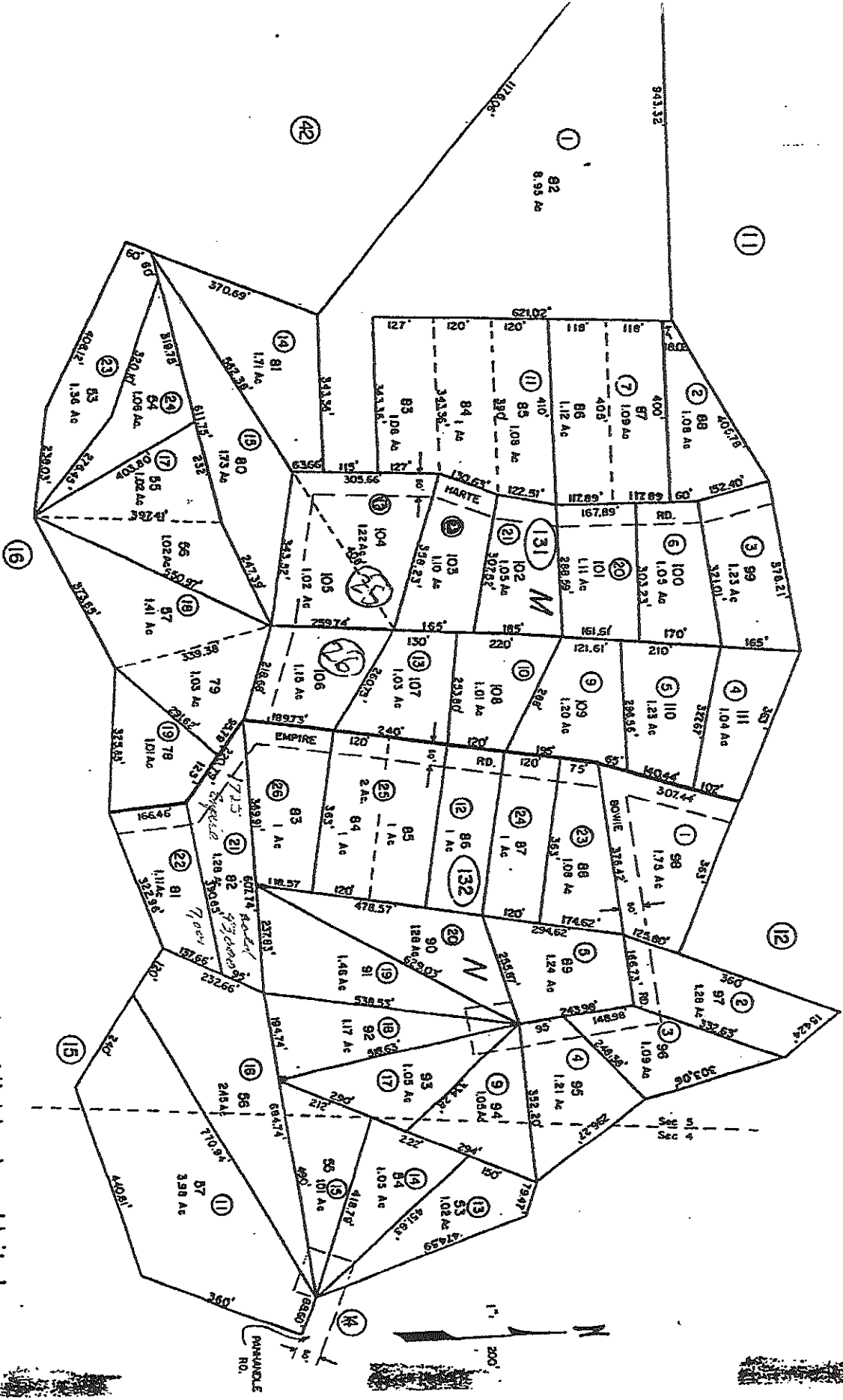


Portion of Sections  
 32 & 33, T18N, R21E  
 4 & 5, T17N, R21E  
 M.D.B.G.M.

Virginia City, Highlands Unit I  
 STOREY COUNTY

NOTE: This plot is for assessment use only and does not represent a survey. No liability is assumed as to the accuracy of the data delineated hereon. Use of this plot for other than assessment purposes is forbidden unless approved by the Department of Taxation, Division of Assessment Standards.

A Portion of Sec. 4 B5 T17N, R21E, M.D.B. 8.M.



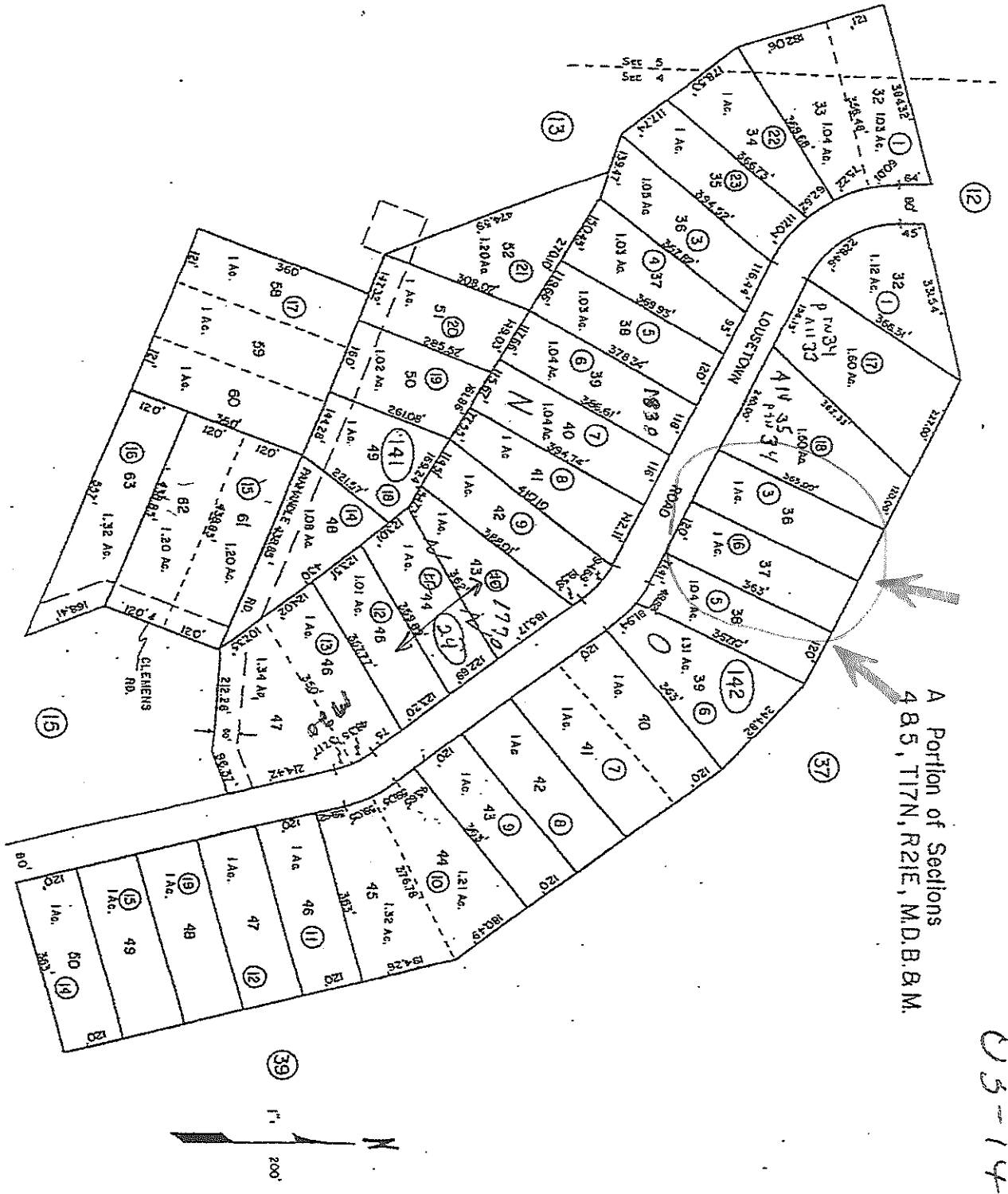
Virginia City Highlands Unit 1

STOREY COUNTY

NOTE: This plat is for assessment use only and does not represent a survey. No liability is assumed as to the accuracy of the data delineated hereon. Use of this plat for other than assessment purposes is forbidden unless approved by the Dept. of Taxation, Division of Assessment Standards.

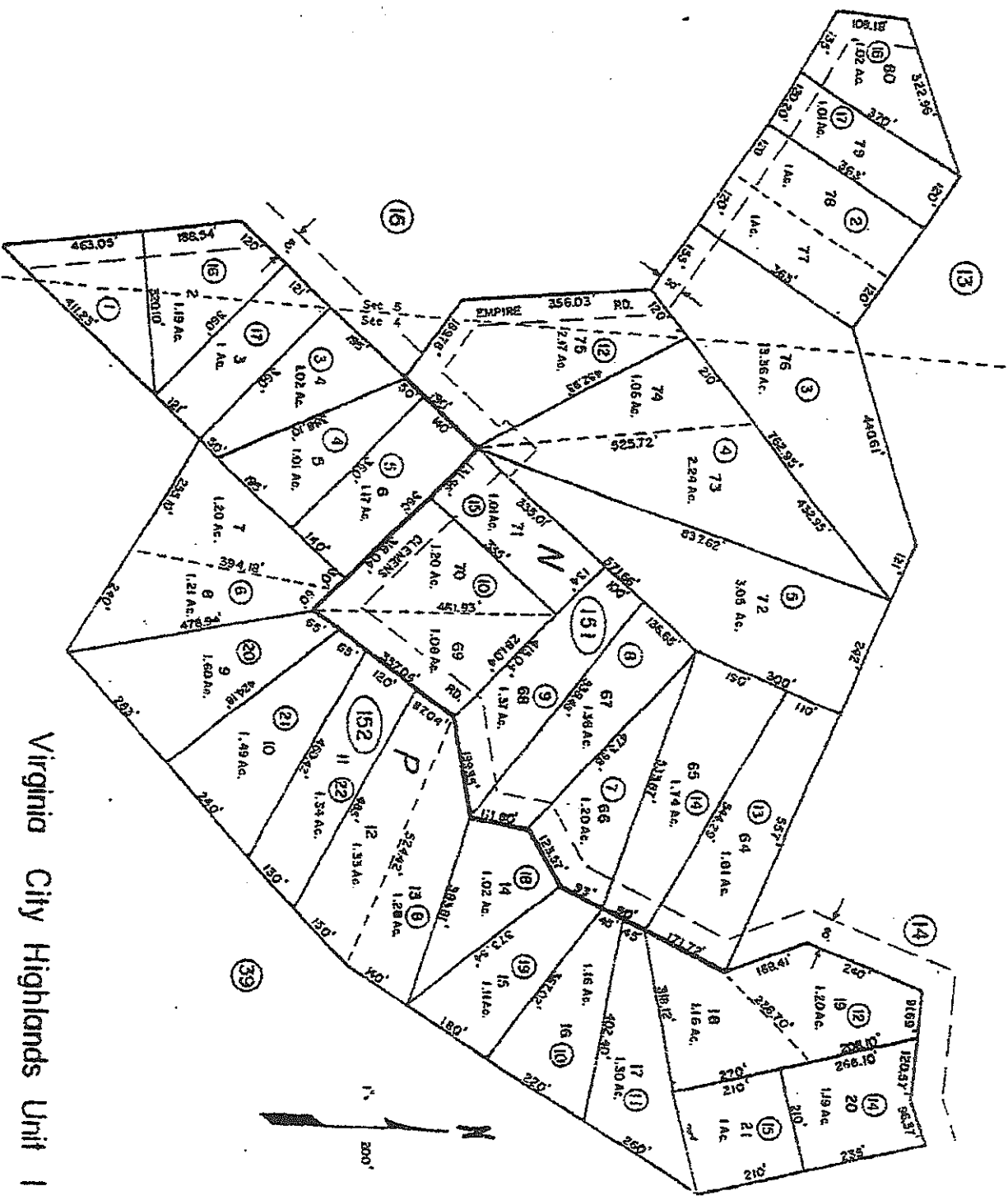
NOTE: This plat is for assessment use only and does not represent a survey. No liability is assumed as to the accuracy of the data delineated hereon. Use of this plat for other than assessment purposes is forbidden unless approved by the Dept. of Taxation, Division of Assessment Standards.

Virginia City Highlands Unit 1  
 STOREY COUNTY



05-14

A Portion of Sec. 4 B 5, T17N, R21E, M.D.B.B.M.



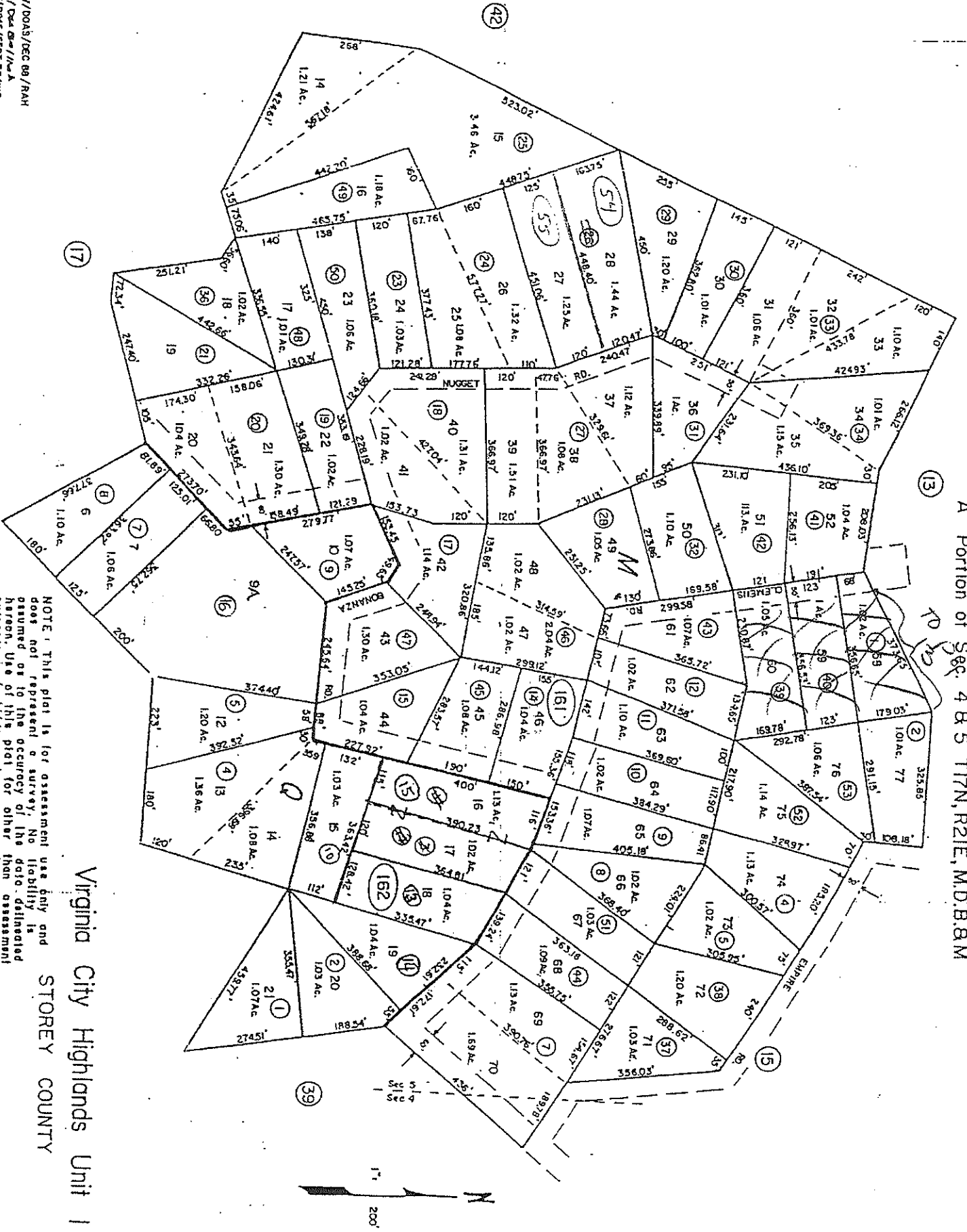
Virginia City Highlands Unit 1

STOREY COUNTY

NOTE: This plat is for assessment use only and does not represent a survey. No liability is assumed as to the accuracy of the data delineated hereon. Use of this plat for other than assessment purposes is forbidden unless approved by the Dept. of Taxation, Division of Assessment Standards.

A Portion of Sec. 4 & 5 T17N, R21E, M.D.B.&M

EV/DOAS/DEC 08/RAH  
 V/DOAS/IL/A  
 V/DOAS/ST/11/11/11

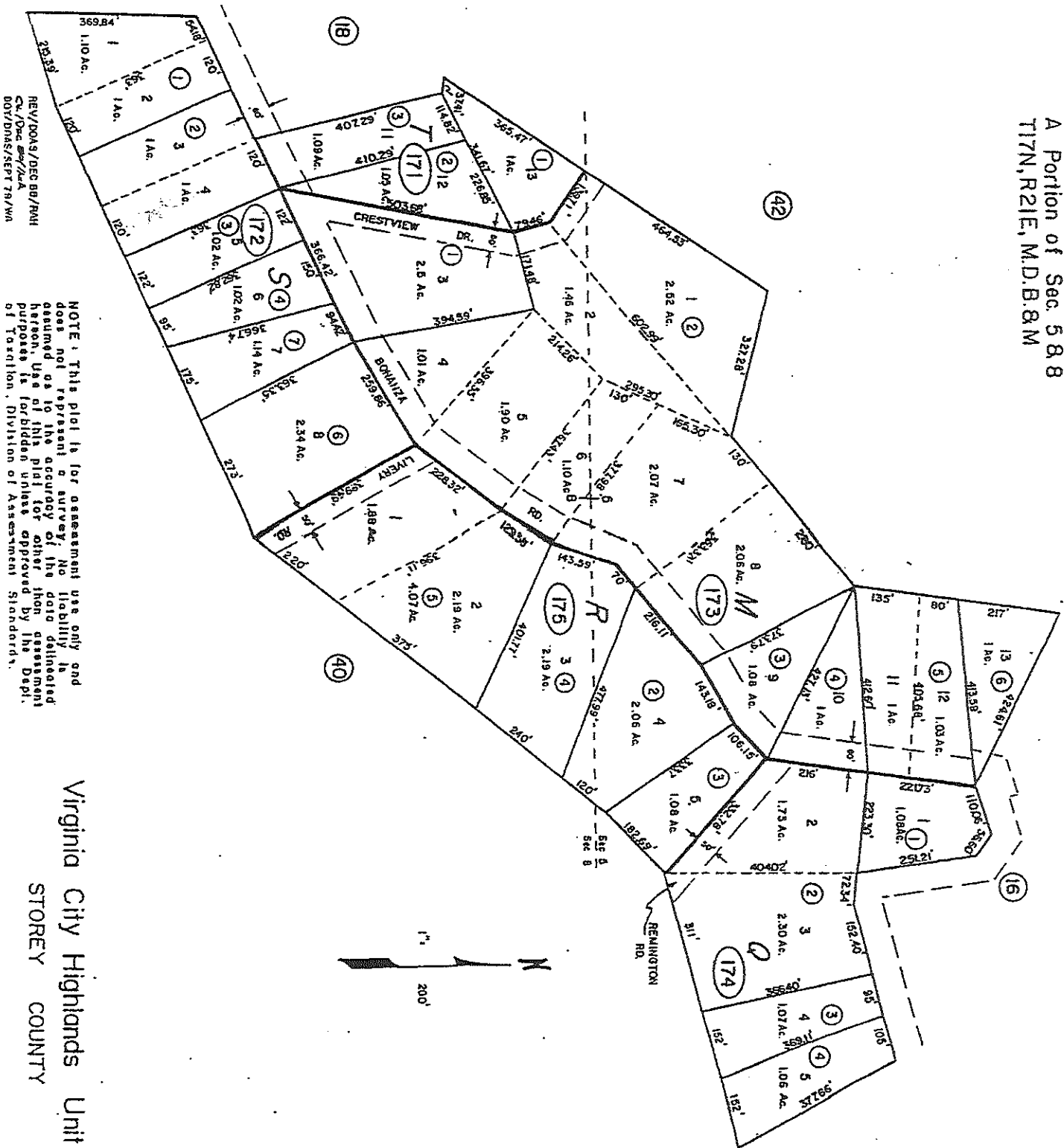


NOTE: This plat is for assessment use only and does not represent a survey. No liability is assumed as to the accuracy of the data delineated hereon. Use of this plat for other than assessment purposes is forbidden unless approved by the Dept.

Virginia City Highlands Unit I  
 STOREY COUNTY



A Portion of Sec. 5 B 8  
T17N, R21E, M.D.B. & M

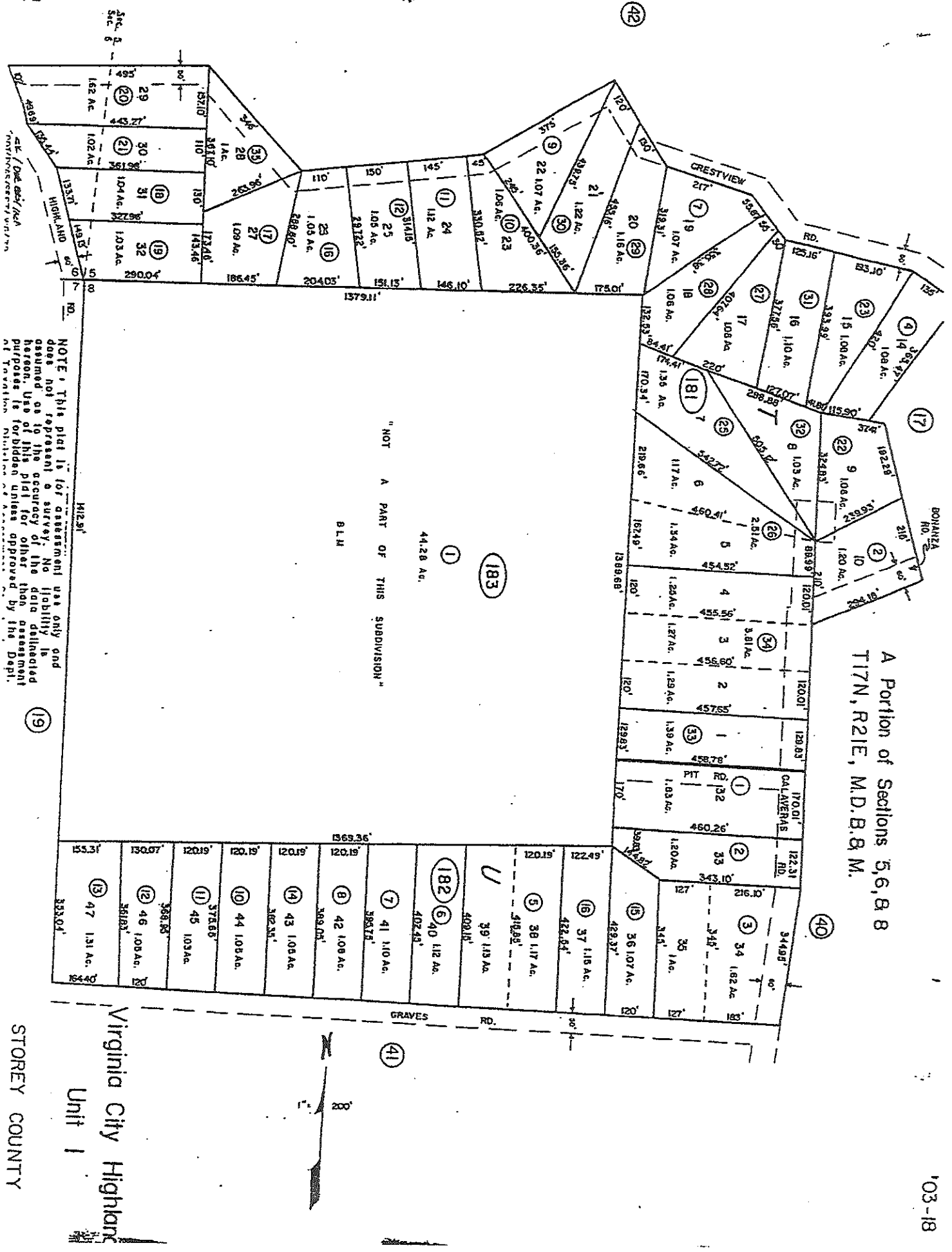


REV/DOAS/DEC 09/RMH  
C.A./Dnc 09/2/AA  
DOV/DNAS/SEPT 78/WM

NOTE: This plat is for assessment use only and does not represent a survey. No liability is assumed as to the accuracy of the data delineated herein. Use of this plat for other than assessment purposes is forbidden unless approved by the Dept. of Taxation, Division of Assessment Standards.

Virginia City Highlands Unit I  
STOREY COUNTY

A Portion of Sections 5, 6, 8  
T17N, R21E, M.D.B. & M.



"NOT A PART OF THIS SUBDIVISION"

BLM

44.28 AC.

NOTE: This plat is for assessment use only and does not represent a survey. No liability is assumed as to the accuracy of the data delineated hereon. Use of this plat for other than assessment purposes is forbidden unless approved by the Dept. of Taxation.

Virginia City Highland  
Unit 1

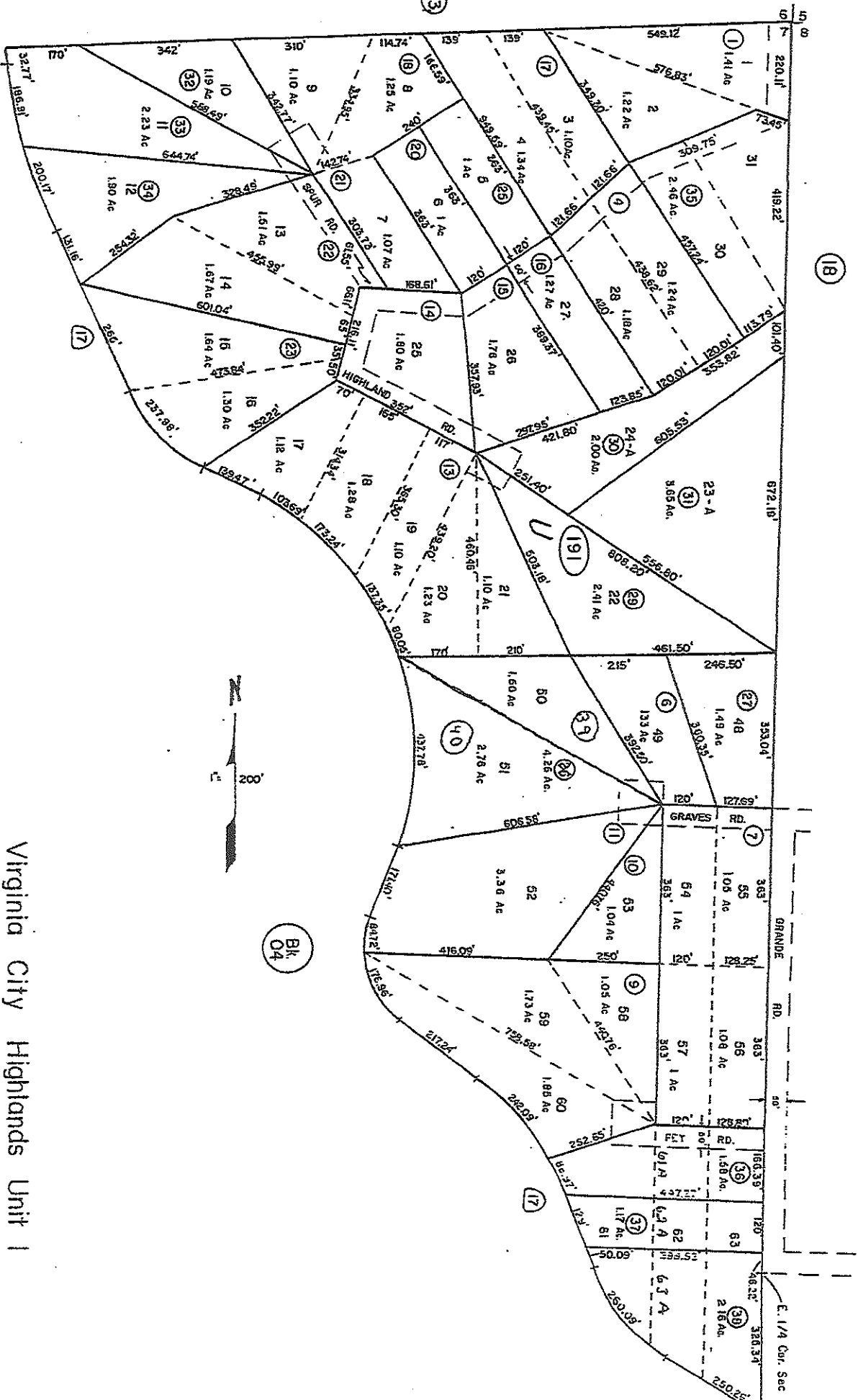
STOREY COUNTY

19

00/RAH

Portion of E<sup>2</sup> Sec 7, T17N, R21E, M.D.B. & M.

03-19



REV/D0A5/JUNE 92/T6  
REV/D0A9/D050 BA/RM  
REV/D0A9/D050 BA/RM

NOTE: This plot is for assessment use only and does not represent a survey. No liability is assumed as to the accuracy of the data delineated hereon. Use of this plot for other than assessment purposes is prohibited.

Virginia City Highlands Unit 1

STOREY COUNTY